

Fiscal Year July 1, 2023 – June 30, 2024

Silvermine



Silvermine Arts Center

Table of Contents

- 3 Letter from CEO
- 4 Guild of Artists
- 10 Galleries
- 36 School of Art
- 44 Outreach Education
- 52 Annual Gifts
- 54 Financial Summary
- 55 Staff
- Board of Trustees
- Institutional Partners

Front & Back cover:
 Debra Burger, *Three Peonies*
 Caroline Bergonzi, *Vision*

Page 2:
 Nancy Lasar, *Strange Attractors*

Page 3:
 Flowers from an Ikebana Class

Letter from CEO



Reflecting on another remarkable year at Silvermine fills me with immense pride and gratitude. Our Annual Report is more than just a summary of our activities and achievements; it is a heartfelt tribute to the incredible artists who have shaped our journey and to the passion for the arts that continues to inspire our community.

The visionary founders who established Silvermine over a century ago, and the countless artists who have walked through our doors, have all left an indelible mark on our history. Their creativity, dedication, and love for the arts have made Silvermine the dynamic cultural hub it is today. As we look ahead, we honor their legacy by striving for excellence and fostering innovation in everything we do.

This year has been exceptional. Our galleries have come alive with the work of both emerging and established artists, showcasing a rich diversity of voices and perspectives. Our educational programs have nurtured the talents of artists of all ages, helping them to grow and express themselves. It's been a joy to see the next generation of creative minds flourish under our roof.

And, our outreach initiatives have expanded our impact beyond our

walls, bringing the transformative power of the arts to under-resourced communities and schools, ensuring that creativity and expression are accessible to all.

None of this would be possible without you – our incredible members, donors, volunteers, and staff. Your unwavering support allows us to nurture creativity, support artists, and engage with our community in meaningful ways. Together, we are building on the legacy of the past to create a future where art continues to thrive and inspire.

As you read through this report, I hope you feel as proud as I do of all that we have accomplished together. Each milestone and success story is a testament to the enduring power of art to transform lives and bring people together.

Thank you for being a cherished and invaluable part of the Silvermine family. With your continued support, I look forward to many more years of artistic excellence and meaningful community enrichment.

With deepest appreciation,

Barbara Linarducci
 Chief Executive Officer
 Vice-Chair, Board of Trustees



This page: Karen Vogel

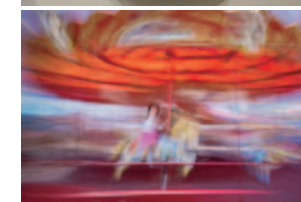
guild of artists

100 years on, we still stand on the shoulders of the artists who created Silvermine with a mission to foster art appreciation and become the cultural center of its community.

Since 1922, Silvermine has been a place where art thrives and community bonds are strengthened. The founding artists created a vibrant space for creativity and artistic exchange, setting a standard that continues to inspire and guide us.

Today, the Guild stands as a testament to their vision. Our current members, a diverse group of talented artists, continue to build on this strong foundation. They bring fresh perspectives, innovative techniques, and new energy to our community, ensuring that our mission remains as relevant and vital as ever.

This year, our Guild members have contributed to numerous exhibitions, workshops, and



community programs that highlight the enduring power of art. Their creativity and commitment are the driving forces behind our success, and their contributions ensure that Silvermine remains a dynamic and evolving institution.

On the following pages, we are proud to feature the solo exhibitions of 4 award-winning Guild members, showcasing the incredible talent and diverse artistic voices within our community. These exhibitions are a reflection of the individual journeys and unique contributions each artist brings to Silvermine.

Sadly, each year we lose some of our cherished artists. This year, we honor six long-time members who made a lasting impression in and to our community. Their work, shown here, highlights the many talents of our Guild Artists.

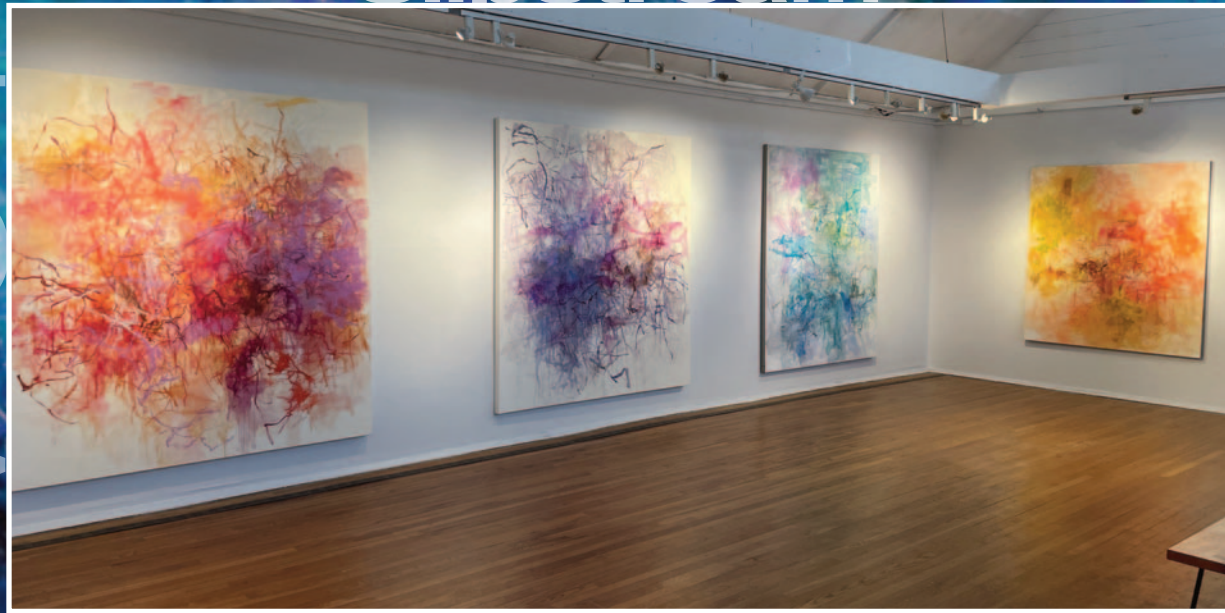
In Memoriam

- Chris Durante
- Leonard Everett Fisher
- Elaine Longtemps
- Robert Sachs
- Arlé Sklar-Weinstein
- Michael Zack

Artists shown in center, top to bottom, in alphabetical order

Guild of Artists

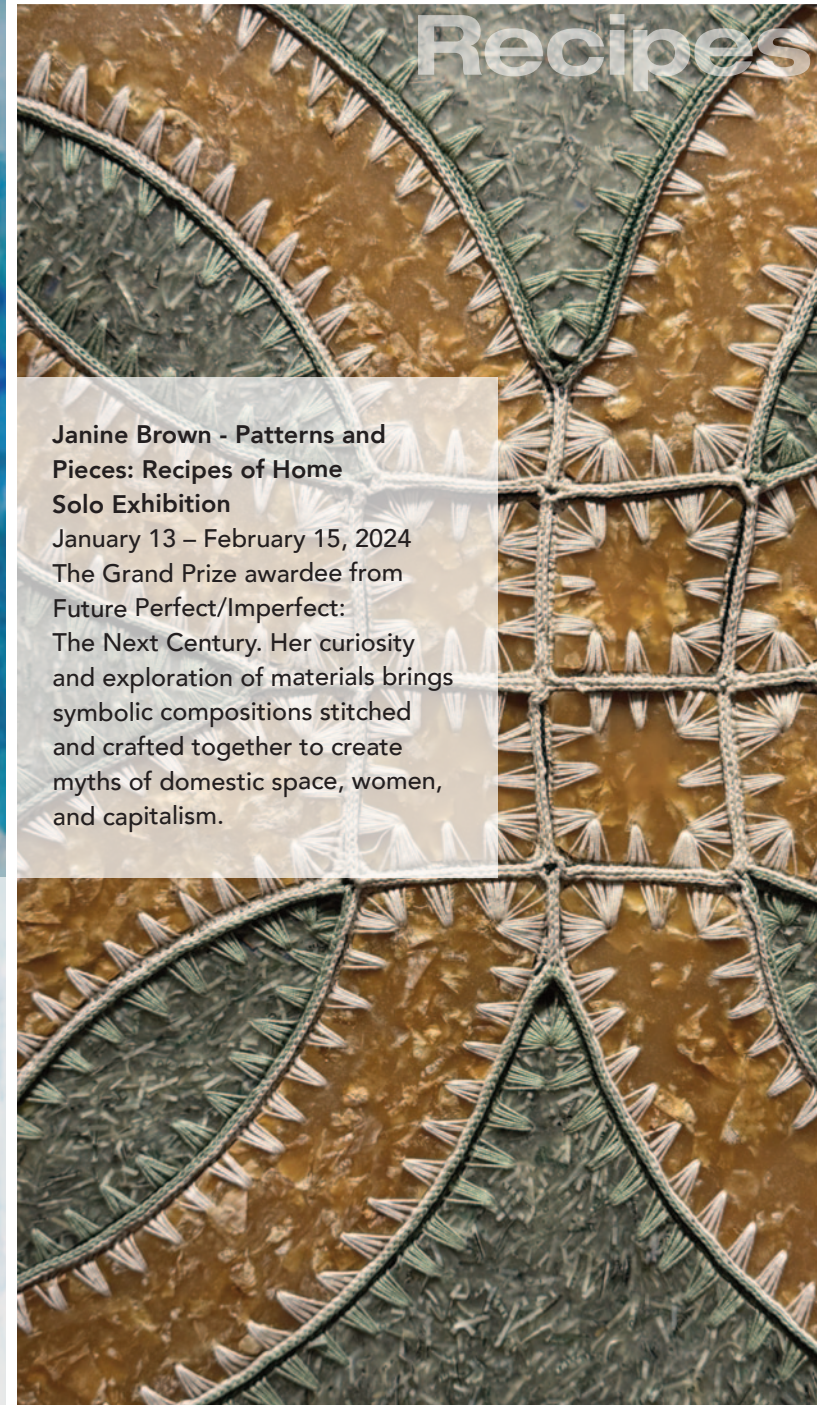
Slipstream



Elizabeth Gilfilen: Slipstream Solo Exhibition
April 13 – May 16, 2023
The 2022 Board Chair Grand Prize awardee, from the 72nd AoNE Exhibition. 15 large scale paintings were exhibited in the Vassos gallery in this dynamic exploration of abstract art conjuring landscapes that bridge inner and outer worlds.



Patterns and Pieces: Recipes of Home

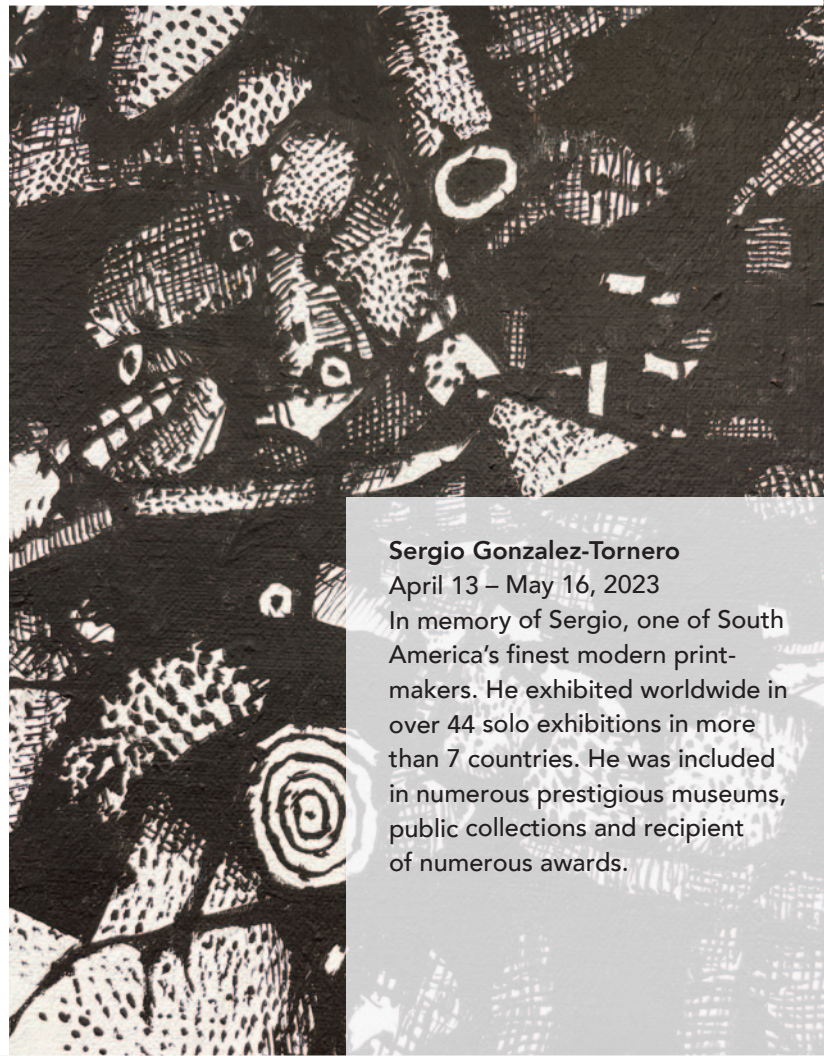


Janine Brown - Patterns and Pieces: Recipes of Home Solo Exhibition
January 13 – February 15, 2024
The Grand Prize awardee from Future Perfect/Imperfect: The Next Century. Her curiosity and exploration of materials brings symbolic compositions stitched and crafted together to create myths of domestic space, women, and capitalism.





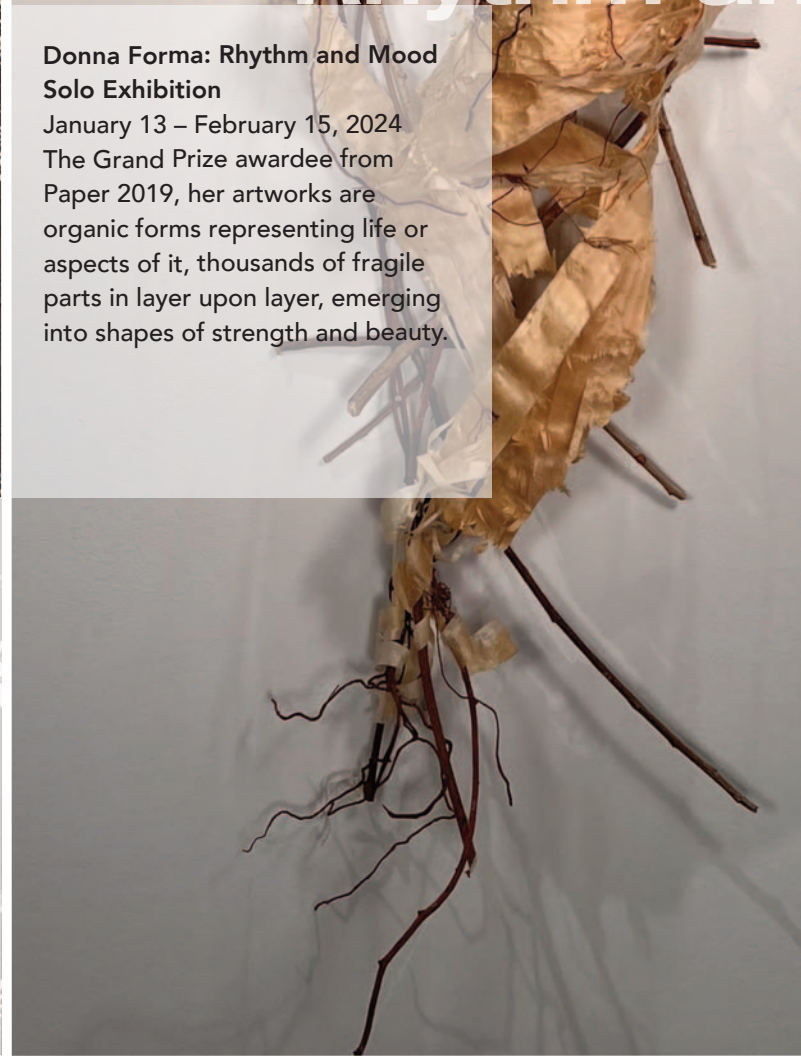
Sergio Gonzalez-Tornero



Sergio Gonzalez-Tornero
April 13 – May 16, 2023
In memory of Sergio, one of South America's finest modern print-makers. He exhibited worldwide in over 44 solo exhibitions in more than 7 countries. He was included in numerous prestigious museums, public collections and recipient of numerous awards.



Rhythm and Mood



Donna Forma: Rhythm and Mood
Solo Exhibition
January 13 – February 15, 2024
The Grand Prize awardee from Paper 2019, her artworks are organic forms representing life or aspects of it, thousands of fragile parts in layer upon layer, emerging into shapes of strength and beauty.





This page: Hiroko Ohno
Opposite page: Blinn Jacobs

galleries

Our Galleries provide a platform for artistic expression, dialogue, and engagement with the community.



The Silvermine Galleries showcase contemporary art exhibitions featuring the work of local, national, and international artists. These exhibitions span various art forms, including painting, sculpture, photography, printmaking, and mixed media. For over a century, our galleries have provided a platform for artists to exhibit their work and engage with the community.

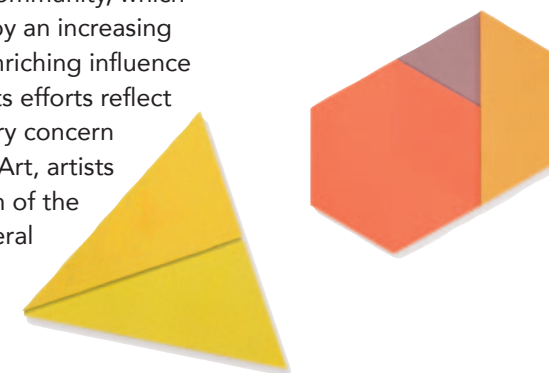
Our approach is all encompassing, tailored to ensure that our exhibitions resonate and are accessible to diverse audiences of various ages and backgrounds. Distinguished guest curators often assess and curate many of our significant exhibitions. Each of our installations

employs art as a means to facilitate learning, providing a platform for fostering engagement across different mediums, disciplines, cultures, and contexts.

The Gallery complex has expanded from the original barn to five exhibition galleries, a sculpture walk and an arts and craft shop. It directs its services for the benefit of its three constituencies, the community of artists, the community of art enthusiasts and collectors, and the broader community, which stands to benefit by an increasing exposure to the enriching influence of the arts. All of its efforts reflect Silvermine's primary concern with 21st Century Art, artists and the interaction of the artist and the general

public. It is this dimension that makes Silvermine unique and distinguishes it from other organizations, for artists are present and part of every activity. As a result, there is creative energy present, a sense of participation, of watching the creative process unfold.

On the following pages, we proudly display selected highlights from this years' exhibitions. We invite you to walk through and enjoy this wide array of talent!





Highlights of this year:

Summer Salon Guild Exhibition
July 22 – August 19, 2023

73rd AoNE
September 14 – November 2, 2023

New Members' Exhibition
January 13 – February 15, 2024

Janine Brown – Patterns and Pieces:
Recipes of Home
Solo Exhibition
January 13 – February 15, 2024

Donna Forma – Rhythm and Mood
Solo Exhibition
January 13 – February 15, 2024

Every Picture Tells a Story
February 28 – April 4, 2023

Instructors Salon
April 13 – May 16, 2024

Elizabeth Gilfilen - Slipstream
Solo Exhibition
April 13 – May 16, 2024

Sergio Gonzalez-Tornero
Solo Exhibition
April 13 – May 16, 2024

Metamorphosis:
The Changing Landscape
May 25 – July 11, 2024

View past exhibitions on our Gallery page:
www.silvermineart.org/galleries/

Summer Salon Guild Exhibition
July 22 – August 19, 2023
Featuring an impressive group of more than 100 members of the Silvermine Guild of Artists working in a broad range of styles and mediums. This annual summer exhibition celebrates our accomplished painters, sculptors, print-makers, mixed media and fiber artists. Curated by Roger Mudre, Silvermine Gallery Director.

Artists clockwise from left:

This page:
Lisa Scroggins

Right page:
Miggs Burroughs, Nina Bentley,
Patti Ettinger and Cecilia Moy Fradet



Summer Salon





Summer Salon



Summer Salon



Artists clockwise from left:
This page foreground:
Peter Petrochko
Right page:
Diane Chamberlain, Frances Eber,
Christa Whitten and Gay Schempp



73rd AoNE
September 14 – November 2, 2023
One of the oldest and most prestigious juried competitions, AoNE highlights the diversity of work that is currently being made by both established and emerging artists. AoNE spotlights contemporary trends and new explorations across various media. Curated by Madeline Cornell– Gallery Director, Winston Wächter Fine Art, NYC, NY.

Artists clockwise from left:

This page:
Becca Barolli

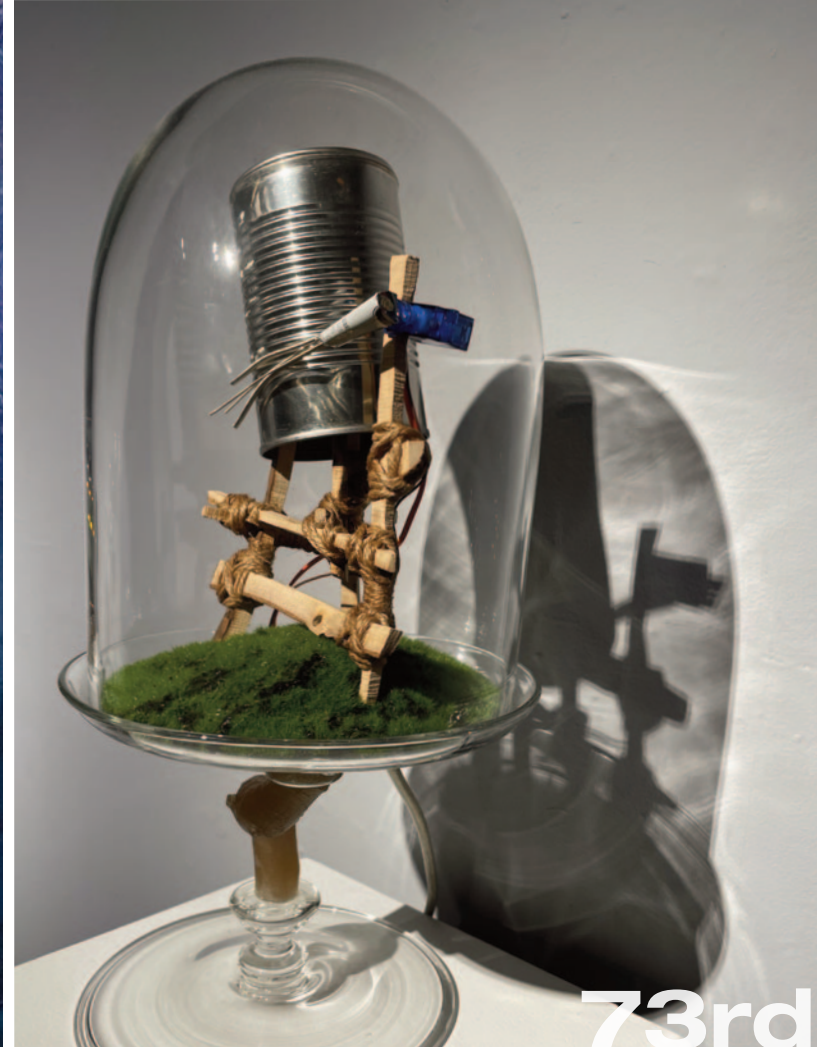
Right page:
Bess French, Priya Green,
Dana Namnoun and Michael Riche



73rd AoNE



ILLUSTRATIONS



73rd AoNE



Artists clockwise from left:

This page:

Heide Follin

Right page:

Lukas Milanak, Lawre Stone,

Yen Ha, Lilah Heyman



New Members' Exhibition

January 13 – February 15, 2024

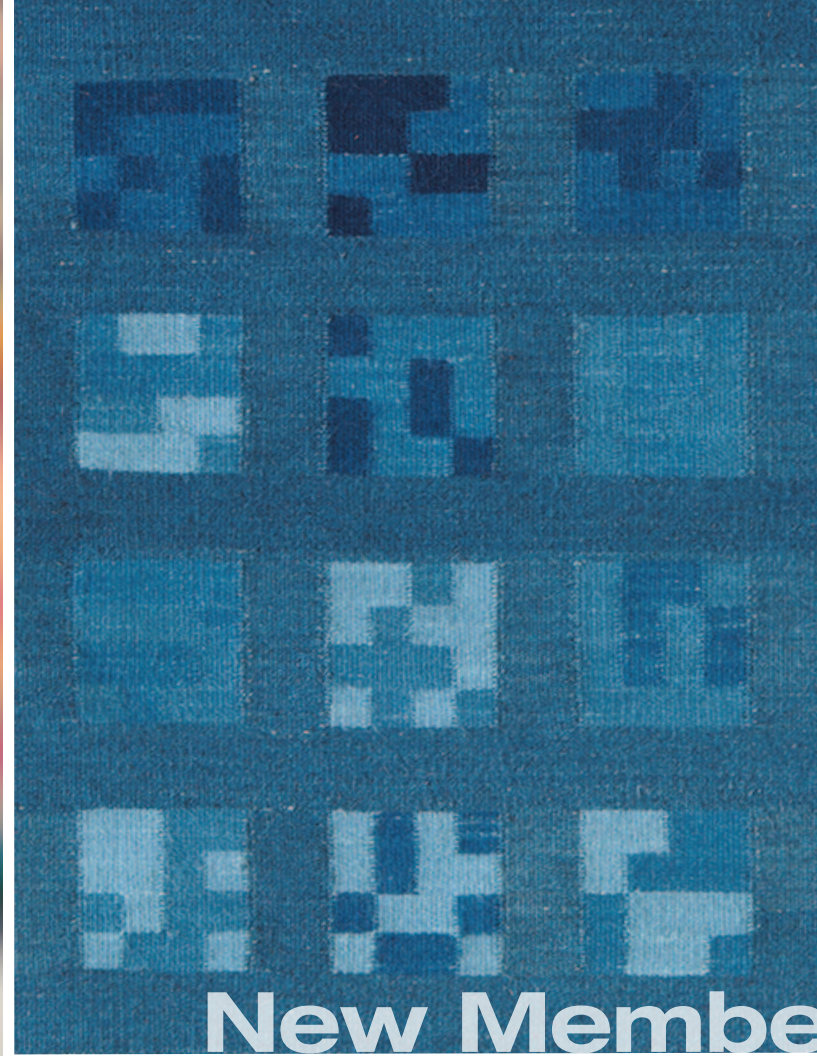
Highlighting the work of 38 new members recently juried into our dynamic artistic community of over 300 professional artists. Many of our members have work represented in permanent collections of some of the world's most prestigious museums, as well as prominent, private and corporate collections.

Curated by Roger Mudre,
Silvermine Galley Director

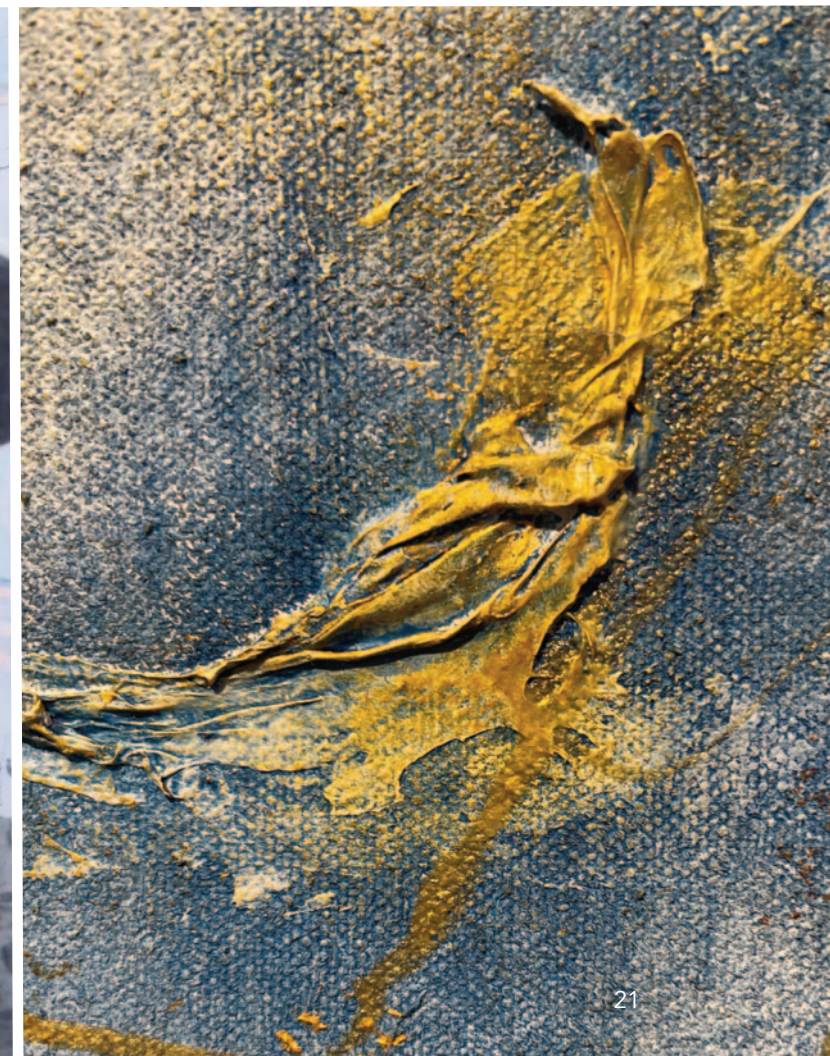
Artists clockwise from left:

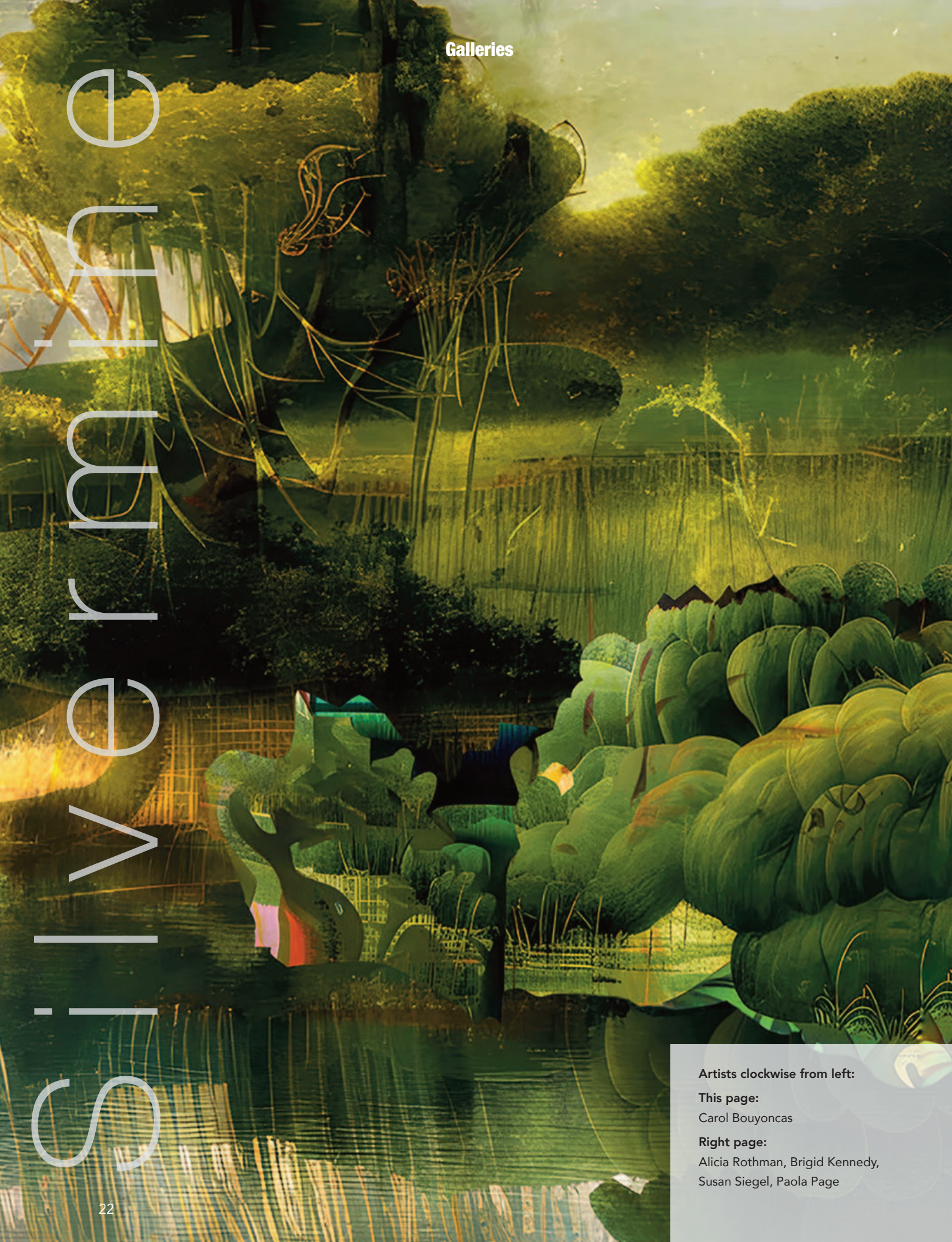
This page:
Bess French

Right page:
Michael Rohde, Aysha Akhtar,
Corinne Lapin-Cohen, Marybeth Rothman

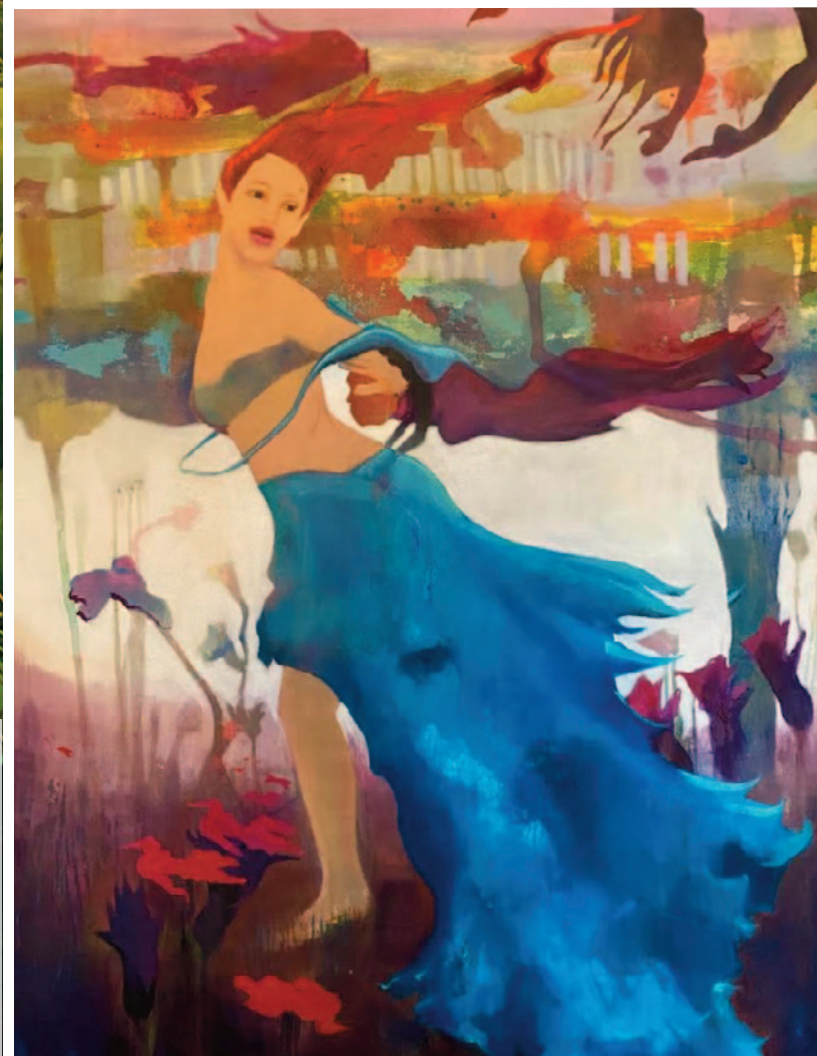


New Members' Exhibition





New Members' Exhibition



Artists clockwise from left:

This page:
Carol Bouyoncas

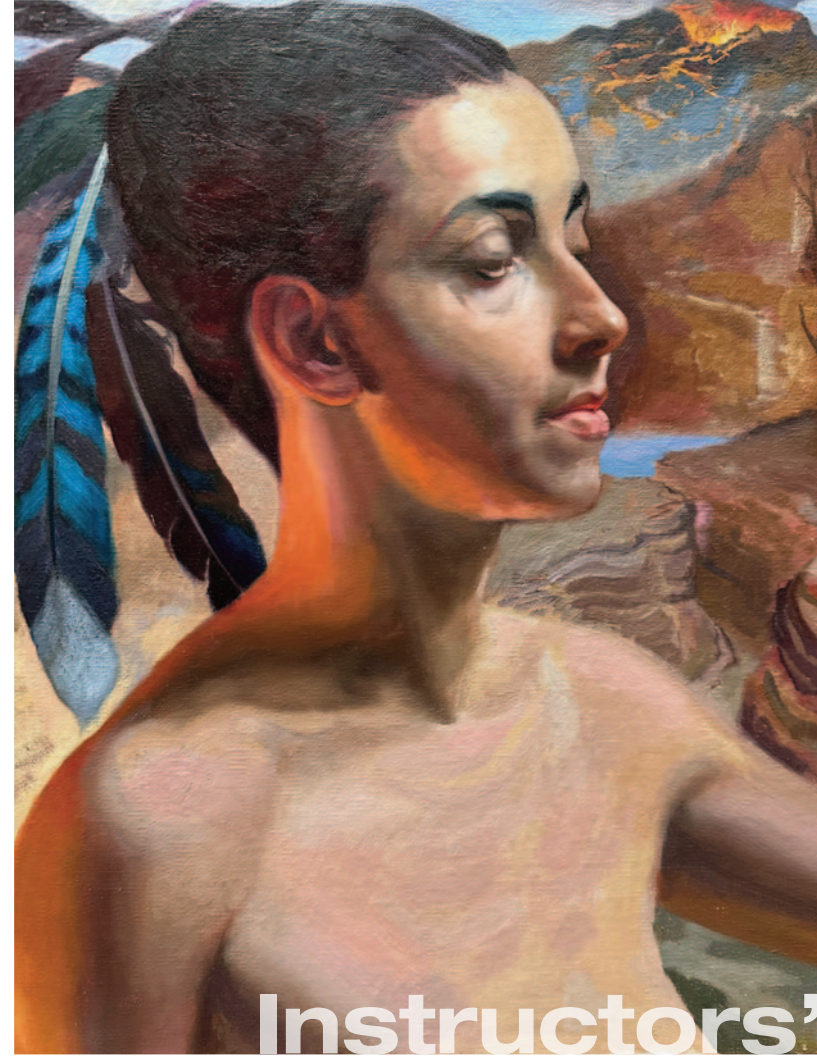
Right page:
Alicia Rothman, Brigid Kennedy,
Susan Siegel, Paola Page

Galleries



Instructors' Exhibition
April 13 – May 16, 2024
The Silvermine School of Art instructors are distinguished artist educators offering courses for students of all ages and levels of experience in a wide range of disciplines.

Artists clockwise from left:
This page:
Shizue Pleasanton, Paola Page (on wall)
Right page:
Justin Wiest, Gail Bradshaw, Maj Kalfus, Nash Hyon



Instructors' Exhibition





Every Picture Tells a Story
 February 28 – April 4, 2024
 This Guild exhibition invited viewers to explore the power of visual storytelling. Each work on display had an accompanying statement from the artist, providing context and insights into understanding the artist's intentions and the underlying narratives. Curated by Roger Mudre, Silvermine Gallery Director.

Artists clockwise from left:
This page:
 Louise Cadoux, sculpture
Center:
 Elysa DeMartini, sculpture
Right page:
 Judith Orseck Katz, sculpture



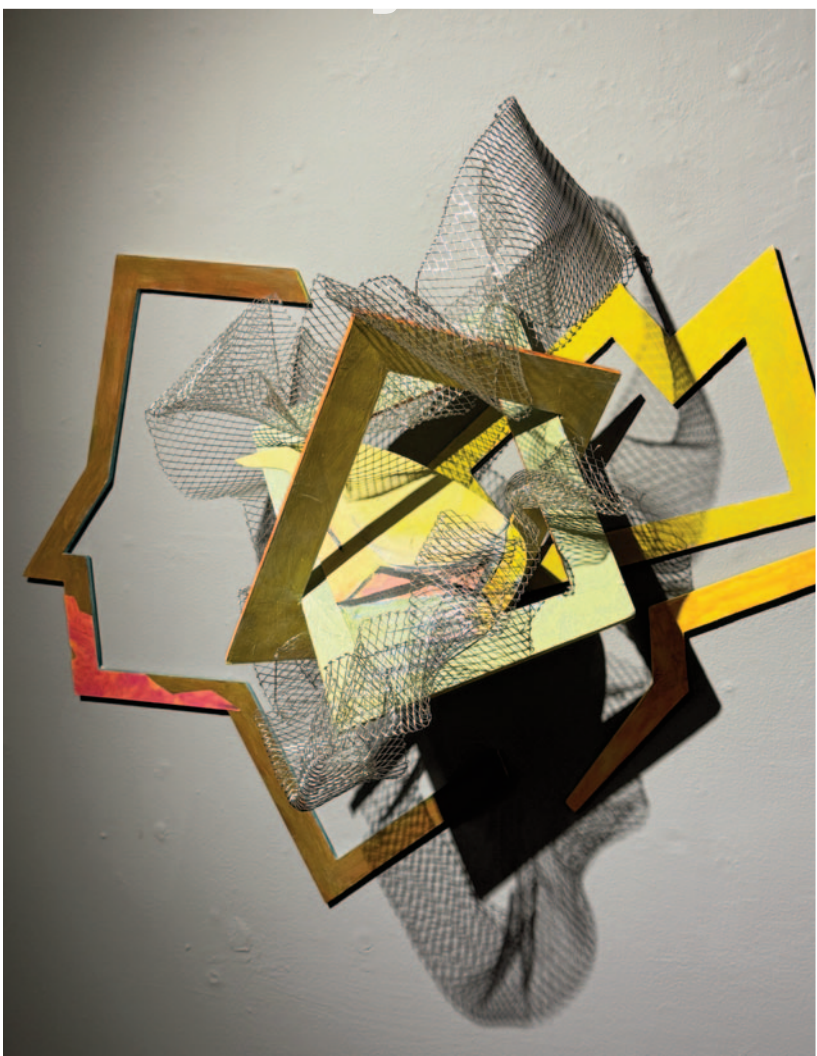
Every Picture Tells a Story



Every Picture Tells a Story



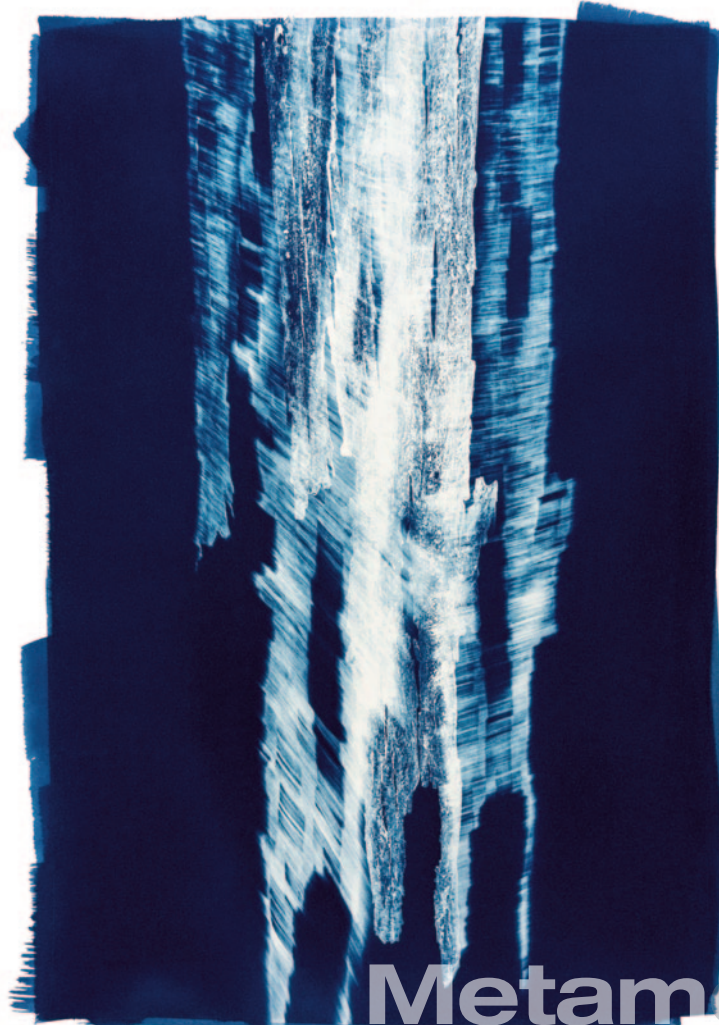
Artists clockwise from left:
This page:
Susan Fehlinger, Camille Eskell,
Carol Paik, Linda Kourkoulis
Right page:
Robert Loebell, Susan Clinard,
Leslie Giuliani, Judith Steinberg





Metamorphosis:
The Changing Landscape
May 25 – July 11, 2024
This exhibition reflected upon the transformations occurring in our natural surroundings and contemplated our planet's past, present, and future. The exhibit aimed to encompass various perspectives and interpretations of the changing landscape. Curated by Katherine Fleming, founder and director of Bridge Initiative, a nonprofit that unites art and science to create public art for environmental advocacy.

Artists clockwise from left:
This page:
Teri Figliuzzi
Right page:
Rebecca Clark, Debra Burger, Ana Tetelman, Karen Cipolla

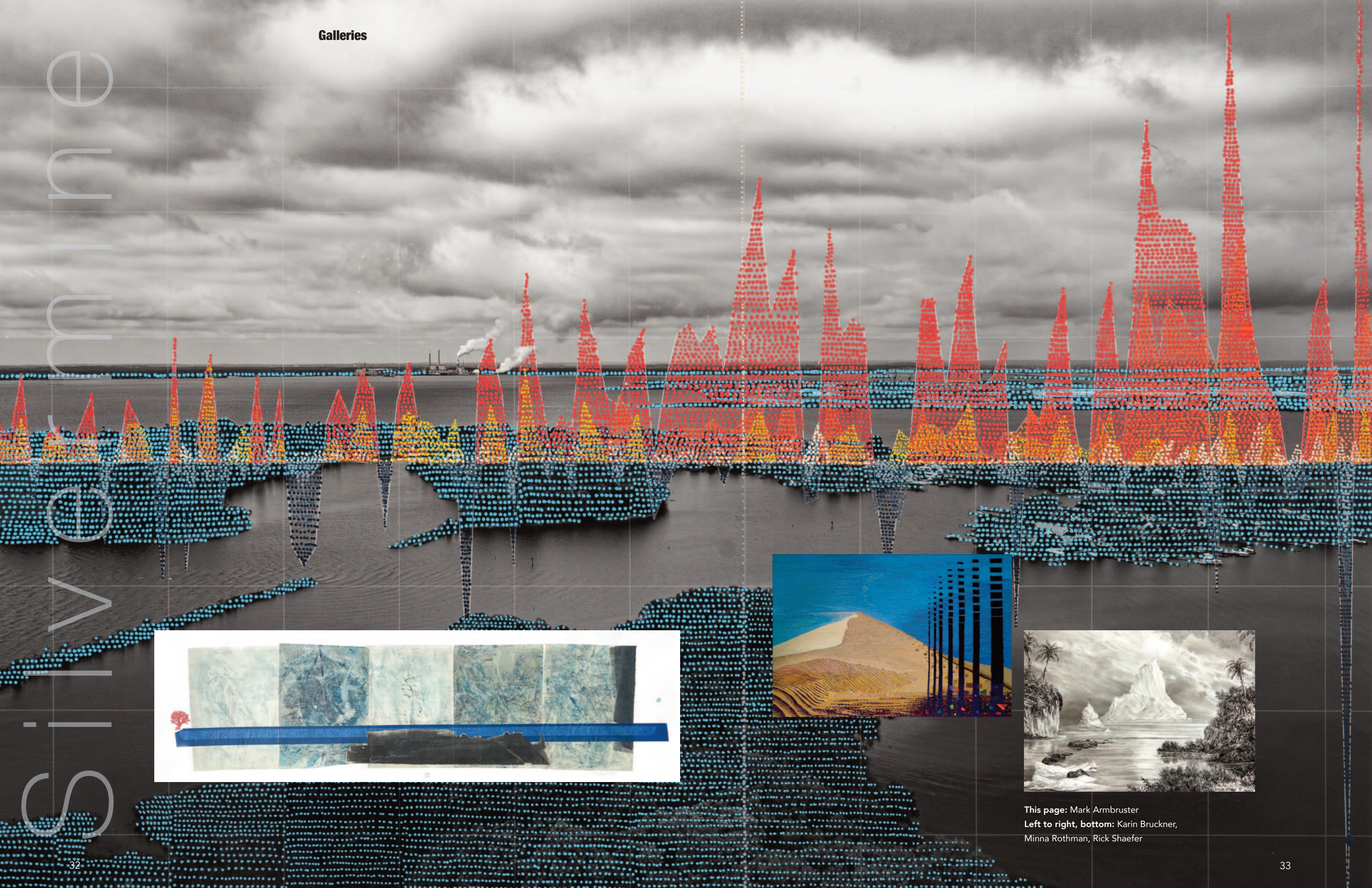


Metamorphosis



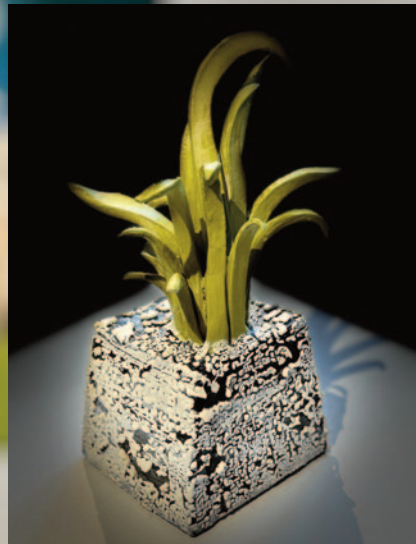
Bridge Initiative

eminence



This page: Mark Armbruster
Left to right, bottom: Karin Bruckner,
Minna Rothman, Rick Shaefer

ermine
live
s



Artists clockwise from left:
This page:
Tini Pinto, Tini Pinto, Rosalind Shaffer, Tini Pinto
Right page:
Lauren Quinn, Susan Hoffman Fishman, Anne-Claude Cotty, Susan Hoffman Fishman



Metamorphosis





school of art

The School of Art has always been a beacon of creativity, built on the foundations laid by our esteemed instructors who have shaped its legacy.

This past year, we have continued to honor this rich heritage by expanding our horizons and embracing new opportunities for artistic growth and innovation. We are thrilled to have welcomed 18 new instructors to our already distinguished faculty, each bringing a wealth of experience and fresh perspectives to our school.

These new instructors have enabled us to introduce an exciting array of classes, broadening the scope of our curriculum and providing students with even more avenues for creative exploration. Among the new offerings are classes in upholstery, botanical printing, animal oil portraits, cartooning, clay portraiture and mosaics. Our diverse range of classes ensures that there is something for everyone, fostering a vibrant and inclusive artistic environment.

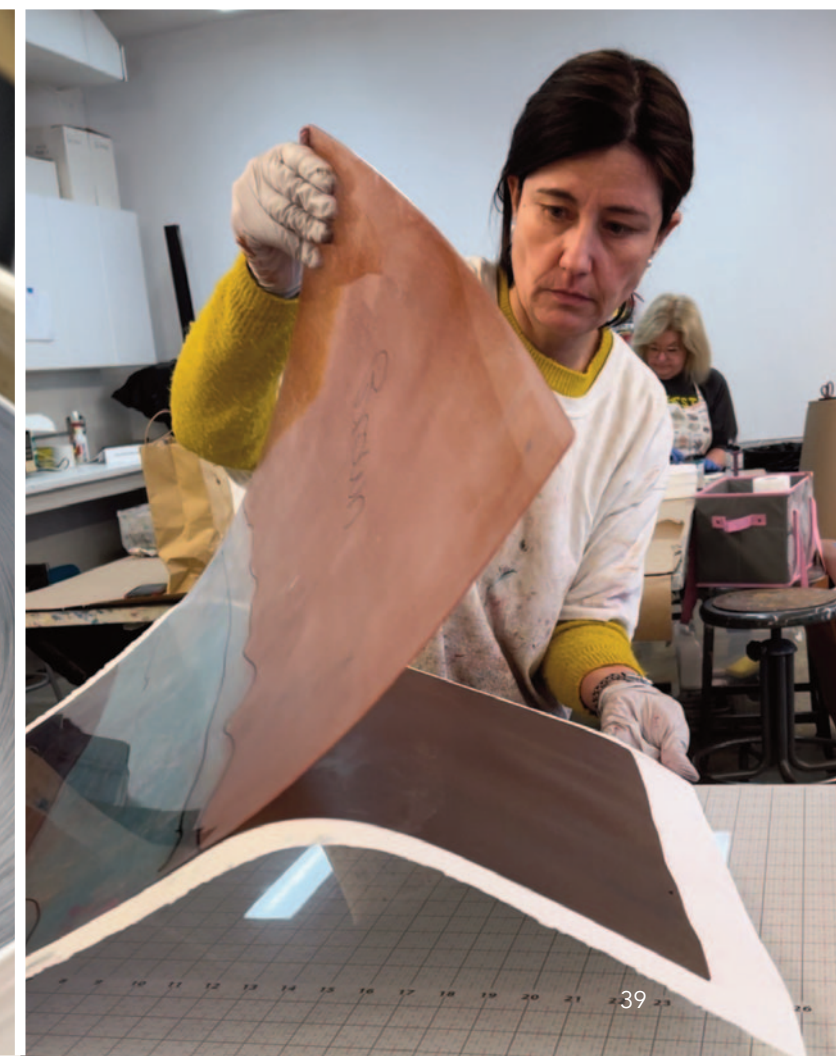


Additionally, our Student Gallery has been a lively space throughout the year, serving as a showcase for the incredible work of our students. The gallery has hosted a series of exhibitions featuring pieces from both the school and our outreach programs, highlighting the diverse talents and achievements of our students.

As we look to the future, we are excited to continue nurturing and celebrating the artistic talents within our community, building on the successes of this past year and exploring new horizons in the year to come.



The legacy of Silvermine's School of Art is alive and well, and we are committed to preserving its spirit while forging new paths in the world of art education.





summer camps

Since 1994, Summer Art Camps have introduced the next generation to the world of art through experimentation, creative thinking, and social engagement.

The campus at Silvermine transformed in June as we welcomed children over a period of 10 weeks for our Summer Art Studio programs. The celebratory spirit of spring, shifted to the bustling energy of summer camps, as children of all ages joined us for a creative experience, enjoying a wide variety of high quality arts education throughout the summer.

Summer Art Studios encourage experimentation, creative thinking and skill development in a safe, fun, supportive and socially engaging environment with other creative youth. Age-specific programs are led by our professional Teaching Artists with classes specifically designed to ensure personalized attention.



A wide variety of disciplines are available including pre-k process art, drawing and painting, ceramics, cartooning, glass flame working, photography, and printmaking.

Silvermine campers had the opportunity to attend either morning or afternoon camps and those who choose to spend the entire day at Silvermine enjoyed a free and supervised lunch period known as Lunch Bunch, in which students participated in unstructured art making and engaged in games.





summer camps



SILVERMINE



Earthplace: Bridging Art and Science

Combining hands-on learning and art, students from 4 elementary schools travel to Earthplace to experience the great outdoors with naturalists, and meet resident animals. Silvermine Teaching Artists then visit the students in their classrooms to create mixed media artwork that helps reinforce new knowledge and vocabulary.

outreach

Collaboration and partnership are at the heart of our mission. By fostering a love for art and creativity, Silvermine ensures that the artistic spirit continues to thrive.

Silvermine isn't merely a physical space; it's a dynamic hub where creativity flourishes, and community bonds are forged. Our Outreach Programs extend beyond the studio walls, reaching into the very fabric of our community.

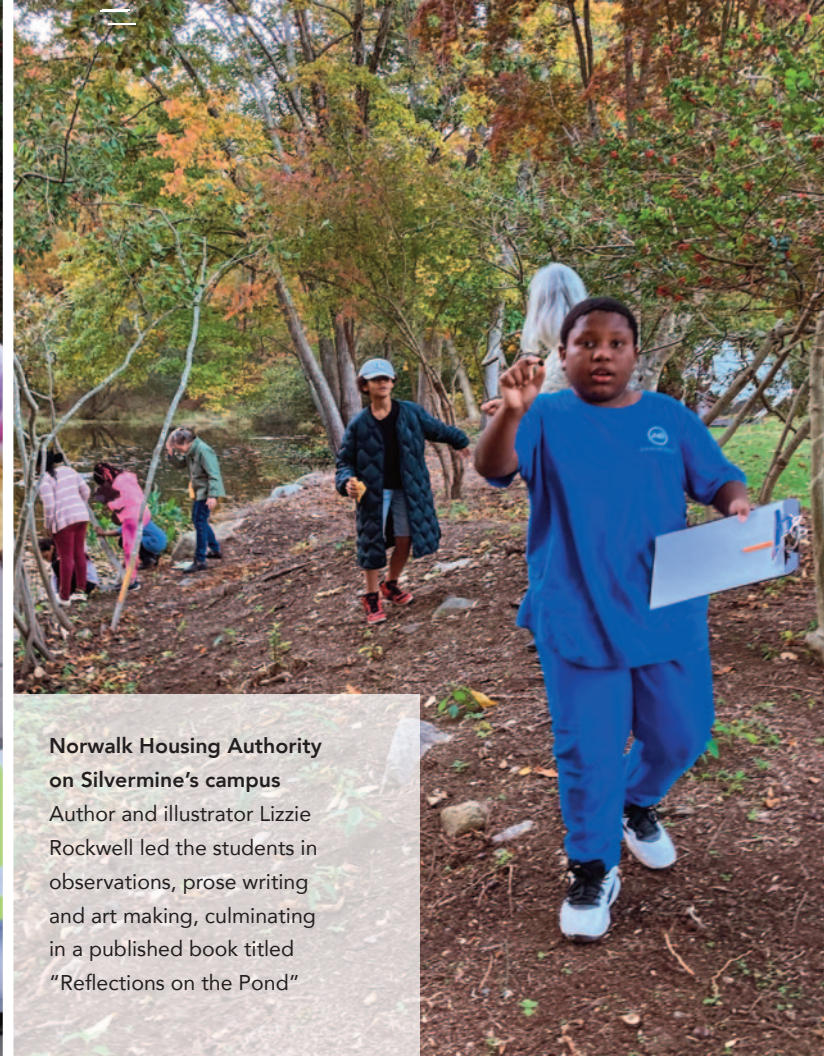
Art Partners Programs

Over the last three years, Silvermine and Earthplace have forged a unique alliance, providing area students with comprehensive STEAM (Science, Technology, Engineering, Arts, and Math) experiences. This collaboration began during the pandemic, merging complementary programming with public school curricula to enhance learning at under-resourced schools in



Bridgeport and Norwalk. This ongoing partnership symbolizes a commitment to nurturing young minds through the fusion of art and science, highlighting the importance of holistic education in today's world.

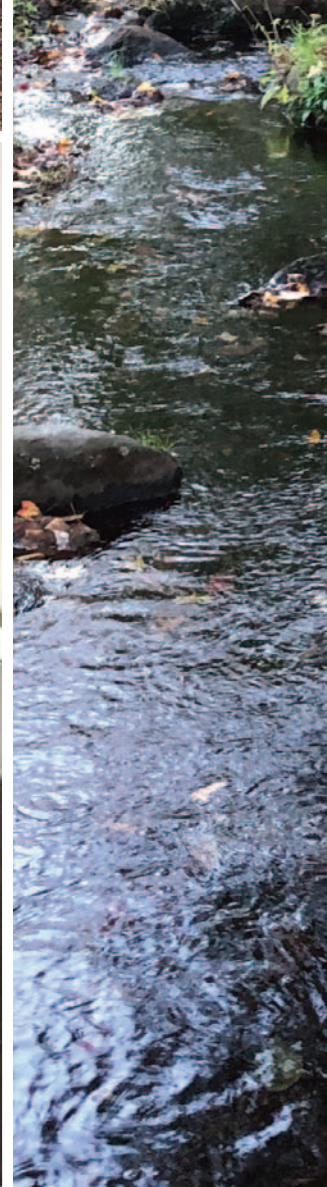




Norwalk Housing Authority on Silvermine's campus
Author and illustrator Lizzie Rockwell led the students in observations, prose writing and art making, culminating in a published book titled "Reflections on the Pond"



Outreach Education





Photos clockwise from top:

Left page:
Silvermine School's 25th
Mural Project

Right page:
Claytor Magnet School,
Hallen School 3rd grade
Student Portraits



Nurturing Tomorrow's Artists

Our collaboration with urban schools—Norwalk, Bridgeport, and Stamford—goes beyond providing art classes. It's about empowering young minds. These students often face socio-economic challenges, limited resources, and educational inequities. By partnering with their schools, we bridge gaps and offer them a creative haven. We believe that every child deserves the chance to express themselves through art, regardless of their circumstances.

Our programs aren't just about paintbrushes and canvases; they're about fostering resilience, self-expression, and critical thinking. Our Teaching Artists become mentors, guiding them through the creative process, encouraging risk-taking, and celebrating their unique perspectives.



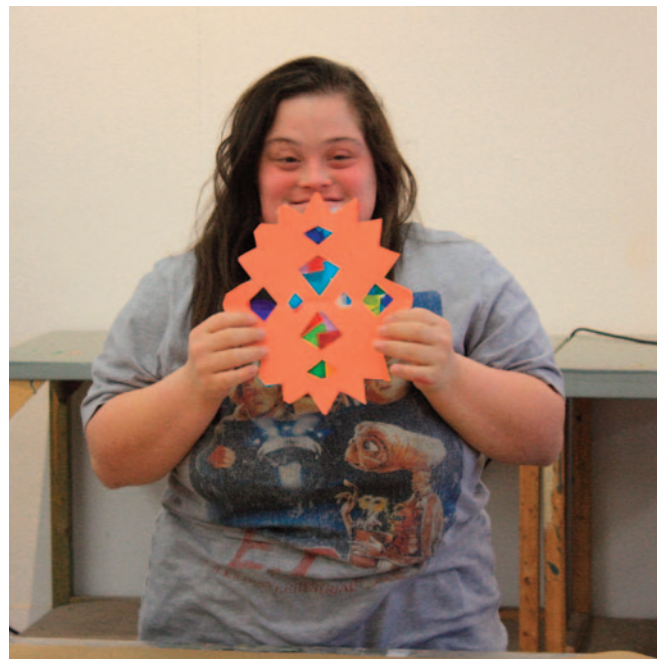
Silvermine



Outreach Education

ArtAcademy: Inclusion and Empowerment

Our collaboration with STAR, Inc. is a testament to the transformative power of art. The “ArtAcademy” program welcomes adults with intellectual and developmental disabilities. Here, they find



acceptance, purpose, and joy. Through painting, drawing, and mixed media, they express emotions that words often fail to capture. The studio becomes a sanctuary—a place where abilities shine brighter than disabilities.

Participants gain confidence, social skills, and a sense of belonging. In this partnership, we redefine what it means to be an artist, emphasizing the process over the product.

Collaborating Beyond Boundaries

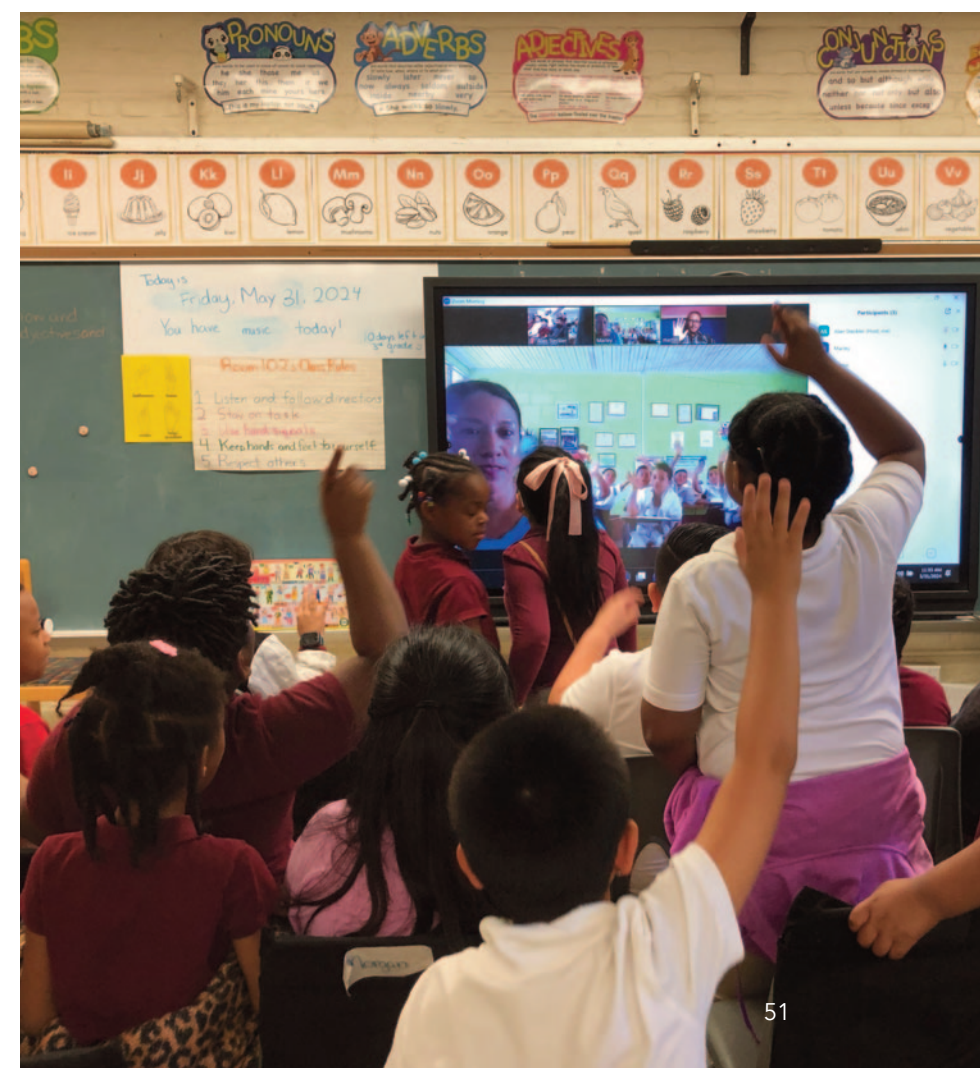
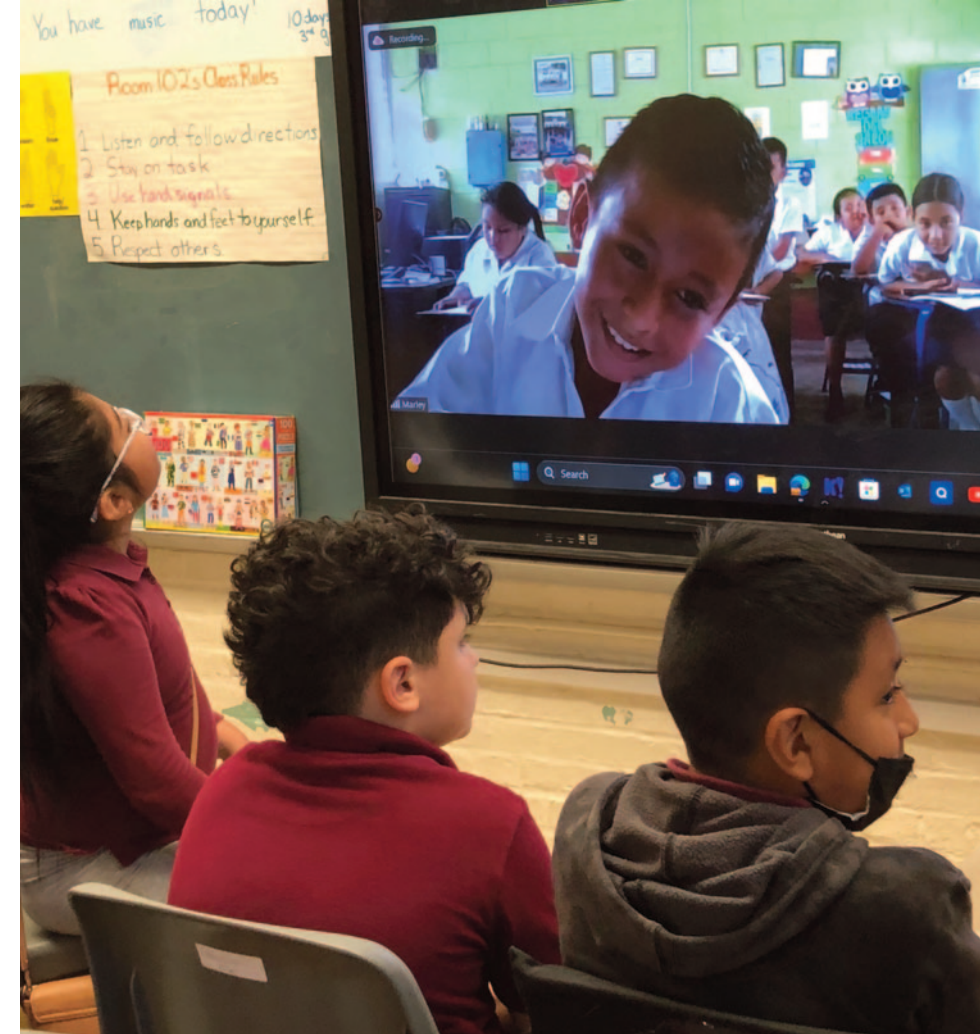
Our partnerships with organizations like Silver Hill Hospital and Creative Connections embody a shared vision of using art to create meaningful change. With Silver Hill Hospital, we’ve developed a specialized program that integrates art into therapeutic practices, offering clients a unique avenue for emotional healing and creative expression. This initiative brings together clients, art therapists, and instructors in a collaborative process that supports mental health and recovery.

Similarly, our collaboration with Creative Connections goes beyond traditional artistic limits, creating cultural exchanges that promote understanding and empathy among varied cultures. Through these exchanges, we help foster a deeper sense of global citizenship, using art to bridge gaps and connect people across different cultures.

At Silvermine, our mission isn’t confined to canvas and clay—it’s etched into the relationships we nurture.

These partnerships ripple outward. They remind us that art isn’t solitary; it’s communal. When we collaborate, we amplify our impact, reminding us that art isn’t a luxury; it’s a necessity.

Together, we create an engaging narrative—one that celebrates creativity, inclusion, and the human spirit.



LIFETIME GIVING

\$500,000+

Connecticut Office of the Arts

\$200,000 - \$499,999

Rose-Marie Fox & Bill Shanahan
Hilda Kraus
Jeniam Foundation
Barbara & William Hilson
Daniel Edward Offutt, III Private
Foundation Trust
Emily Daggy Vogel
Hearst Media / Hearst Foundation

\$100,000 - \$199,999

Connecticut Humanities
Diana Wege Sherogan
New Canaan Community Foundation
Cornelia T. Bailey Foundation
Connecticut Health and Educational
Facilities Authority
The Daphne Seybolt Culpeper
Foundation
Jan & Robert Dilenschneider
Estate of Elizabeth Neuberg
Henry Nias Foundation, Inc.

\$50,000 - \$99,999

Stephanie Joyce & Jim Vos
Colgate-Palmolive Company
Estate of Gail Symon Hicks
Diana & Lyman Delano
Ann Weiner
Pamela Davis
Marilyn Clements
Alex G. Nason Foundation
Fran Henry-Meehan
Susan & Bob Bishop
M.E. Hart Foundation
Nancy McTague-Stock
Ann & Gilbert Maurer
Katharine Draper
The Emily Hall Tremaine Foundation
Estate of Eleanor P. Nichols
June & Ron Ahrens
Richard Bieder
Fairfield County's Community
Foundation
Warren Hicks
The Annenberg Foundation
Estate of Louise Gaudet
Town of New Canaan
Frances Makara

Annual Gifts

\$50,000+

Henry Nias Foundation, Inc.

\$20,000 - \$49,999

Connecticut Health and Educational
Facilities Authority
Common Sense Fund

\$10,000 - \$19,999

Connecticut Humanities*
Cornelia T. Bailey Foundation*
Rose-Marie Fox & Bill Shanahan*
Barbara & William Hilson*
Carlos Garrido
United Way of Coastal and
Western Connecticut

\$5,000 - \$9,999

Daphne Sampson
Judith Steinberg*
Marilyn Clements*
The Pitney Bowes Foundation, Inc.
New Canaan Community Foundation*
Macquarie Group
Bedford Family Social
Responsibility Fund

\$1,000 - \$4,999

April Book
Cynthia Brown
Mark Bulkin
Connecticut Office of the Arts*
Diana & Lyman Delano*
Dr. Lois Dreyer*
Cindy Eigen
Carole Eisner*
Eversource Energy Foundations, Inc.
Exchange Club of New Canaan
Donna Farber*
Emily Fischer
Jeanine Giddings*
Lee Glicklich
Melissa Goble
Lisa Halmi
Marjorie Hsu
Stephanie Joyce & Jim Vos*
Craig Lambert
Peter Lampke*
Deborah Lanzner
Kristi Liebernam
Peter Lopatin
The George A. Long & Grace L. Long
Foundation*
Michael Maresca
Sidney Marshman
Erin & Kevin Moore*
Roger Mudre*
Carolyn Numrich
Susie & James Perakis*

Lindly Pless
Arthur Potts*
Penny Putnam*
Andrea Resnick*
Laura Rollins
Missy Savard & Ron Wilklow*
Jenny Spilka
Tracey Stidolph
Grace Hui Tang*
The Knapp Fund*
Randi Van Pelt
Victoria Young

\$500 - \$999

ASML
June & Ron Ahrens*
Bobbie Crosby*
John Harris*
Leon Hsu
Irving & Aaronel deRoy Gruber
Charitable Foundation*
The Maurice Goodman Foundation*
Karin McCormick*
Rich Moore
Nancy Reinker
Dee Sachs*
Susan Sommer Schweitzman*
Deborah & Alan Steckler*
Margot & Mark Thorsheim
Meg Tweedy*

\$100 - \$499

Pippa & David Ader*
Leslie Alexander
Yhatrid Algarin
Carol & Alan Alterman*
William Bau
Hui Bau
Rem Bigosinski
Janice Billingsley
Sonia Bombart
Stephanie Braxton
Sylvia & Louis Broudy*
Janine Brown*
James Buxton
Jennifer Cadoff*
Ruth Carlucci
Eric Chiang*
Megan Collins*
Beth Croke
Andrew Davis*
Carol & Joel Davis*
Laure Dunne*
Thomas Emmons
Deane & Layne Evans
Heide Follin*
Donna Forma*
Karen Frank*

*3 Years Continual Giving

Sally Frank*
Nathaniel Gibbons*
Leslie Giuliani*
Lois Goglia*
Helen & William Gore*
Susan Hacker Stang
Laurie Harrold*
Vincent Hawley*
Carol Herbig*
Meg Hobson*
Benice Horowitz*
Jerry Huang
Renée Hughes*
Kerri Kazak
Ann Kazak
Lorraine Kennedy*
Renee Khatami*
Matthew Kiernan
Caroline Krediet
Cate Leach
Janet Levine*
Eva Levine*
Katherine Linneman
David Lubarsky*
M. Family Fund*
Ellen Mann*
Lynn Mara
Lori Marrone*
Nancy Marx*
Ellen Mason*
Anne Mauk*
Carolyn McDearmon
Alex McFarlane*
Elizabeth & David McKinnis*
Nancy McTague-Stock
Shana Miller
Melissa & Chappy Morris*
Cynthia Mullins*
Alexandra Nash
Karen & Gary Neems*
Christopher Nelson

Nancy Egol Nikkal*
Karen Ogden
Constance Old
Gregory Osier
Carol Paik
Maribeth & Gregory Payne*
Judy Peknik*
Shizue Pleasanton*
Gwen North Reiss*
Maureen Renahan Krinsley
Andrea Resnick*
Michele Riberdy
Beth Ricciardone
Kathleen Rozsa*
Lucy Sallick*
Rick Shaefer*
Janet & Tom Shanley
Marlene Siff
Mary Silberman*
Anita Soos*
Jane Sutherland
Frank Talcott*
Tara & Fan-Chia Tao
Fanching Tao
Elizabeth Tebbe
Lawrence Tetenbaum*
Jo Ubogy*
Mitchell Visoky*
Karen Vogel
Bonnie Voit*
Torrance York*
Janice & Stephan Yost
Michael Zack*
Florence Zolan*

Up to \$99

David Amerling
Thomas Anastasio*
Lindsay Anfang
Anonymous*
Lana Atamen

Annual Gifts

Stephanie Barnum
Esther Beilenson
Sophia Bellissimo
Haley Bise
Catherine Bishop
Sarah Boyle
Aileen Brill
Ellen Cahill
Katrina Cantwell
Sharon Cavagnolo*
Patricia & Chris Conley
Leigh Conover
Sarah Cutting-Mills
Deb Damascus
Lucy Dathan*
Rebeca Dewey
Susan DiLoreto
Carol Dixon*
Nicola Dougherty
Katherine Downes
Diana Duros
Liza Emilio
Patti Ettinger
Alanna Fagan*
Audrey Fass
Linda Franks
Jay Friedman*
Maria Garcia
Sophia Gevas*
Carrie Giordano
Andrew Graham*
Elon Green
Jeanne Marie Hand
Rosita Hill
Elizabeth Isles*
Paul Johnson*
Shelby Katz
Lorraine Kiernan*
Arete Koutras
Maija Krasts
Terrana-Hollis Kristen

Nancy Lasar*
Ana Lilienfeld
Margaret Lukens
Gabriela Marcus*
Leslie Markus*
Lindsey Meisner
Dorette Moreo*
Caroline Morgan*
Gabrielle Napolitano
Kristin O'Callaghan
Mary Elizabeth &
Christopher O'Connor*
Maura Ohalloran
India Otero
May Rawls
Maria Reed
Martha Robinson*
Lizzie Rosenberg
Marie Rubino
Sarah Ryor
Usana Sansej*
Sue Saylor
Carla Schine
Amy & Stephen Schott*
Susan Sharp*
Julie Sharp
Day Shields*
Betty Staniulis
Sandra Stein*
Alexandra Swenson
Frank Talcott*
Sally Topcuoglu*
Jill Tucker
Pamela Westmoreland*
Christa Whitten
Karen Wilder
Anush Yegyzarian*

Silvermine's continued success in fostering creativity and cultural enrichment would not be possible without the incredible support of our donors, members, and volunteers.

Your commitment enables us to pursue our mission of nurturing artistic talent, expanding access to the arts, and creating meaningful connections within the community.

Whether through financial contributions, in-kind donations, or the gift of your time and talent, your support has a lasting impact on the lives of those we serve.

Thank you for being an essential part of our Silvermine family!

LIFETIME GIVING

\$500,000+

Connecticut Office of the Arts

\$200,000 - \$499,999

Rose-Marie Fox & Bill Shanahan
Hilda Kraus
Jeniam Foundation
Barbara & William Hilson
Daniel Edward Offutt, III Private
Foundation Trust
Emily Daggy Vogel
Hearst Media / Hearst Foundation

\$100,000 - \$199,999

Connecticut Humanities
Diana Wege Sherogan
New Canaan Community Foundation
Cornelia T. Bailey Foundation
Connecticut Health and Educational
Facilities Authority
The Daphne Seybolt Culpeper
Foundation
Jan & Robert Dilenschneider
Estate of Elizabeth Neuberg
Henry Nias Foundation, Inc.

\$50,000 - \$99,999

Stephanie Joyce & Jim Vos
Colgate-Palmolive Company
Estate of Gail Symon Hicks
Diana & Lyman Delano
Ann Weiner
Pamela Davis
Marilyn Clements
Alex G. Nason Foundation
Fran Henry-Meehan
Susan & Bob Bishop
M.E. Hart Foundation
Nancy McTague-Stock
Ann & Gilbert Maurer
Katharine Draper
The Emily Hall Tremaine Foundation
Estate of Eleanor P. Nichols
June & Ron Ahrens
Judith Steinberg
Richard Bieder
Fairfield County's Community
Foundation
Warren Hicks
The Annenberg Foundation
Estate of Louise Gaudet
Town of New Canaan
Frances Makara

Annual Gifts

\$50,000+

Henry Nias Foundation, Inc.

\$20,000 - \$49,999

Connecticut Health and Educational
Facilities Authority
Common Sense Fund

\$10,000 - \$19,999

Connecticut Humanities*
Cornelia T. Bailey Foundation*
Rose-Marie Fox & Bill Shanahan*
Barbara & William Hilson*
Carlos Garrido
United Way of Coastal and
Western Connecticut

\$5,000 - \$9,999

Daphne Sampson
Judith Steinberg*
Marilyn Clements*
The Pitney Bowes Foundation, Inc.
New Canaan Community Foundation*
Macquarie Group
Bedford Family Social
Responsibility Fund

\$1,000 - \$4,999

April Book
Cynthia Brown
Mark Bulkin
Connecticut Office of the Arts*
Diana & Lyman Delano*
Dr. Lois Dreyer*
Cindy Eigen
Carole Eisner*
Eversource Energy Foundations, Inc.
Exchange Club of New Canaan
Donna Farber*
Emily Fischer
Jeanine Giddings*
Lee Glicklich
Melissa Goble
Lisa Halmi
Marjorie Hsu
Stephanie Joyce & Jim Vos*
Craig Lambert
Peter Lampke*
Deborah Lanzner
Kristi Lieberman
Peter Lopatin
The George A. Long & Grace L. Long
Foundation*
Michael Maresca
Sidney Marshman
Erin & Kevin Moore*
Roger Mudre*
Carolyn Numrich
Susie & James Perakis*

Lindly Pless
Arthur Potts*
Penny Putnam*
Andrea Resnick*
Laura Rollins
Missy Savard & Ron Wilklow*
Jenny Spilka
Tracey Stidolph
Grace Hui Tang*
The Knapp Fund*
Randi Van Pelt
Victoria Young

\$500 - \$999

ASML
June & Ron Ahrens*
Bobbie Crosby*
John Harris*
Leon Hsu
Irving & Aaronel deRoy Gruber
Charitable Foundation*
The Maurice Goodman Foundation*
Karin McCormick*
Rich Moore
Nancy Reinker
Dee Sachs*
Susan Sommer Schweitzman*
Deborah & Alan Steckler*
Margot & Mark Thorsheim
Meg Tweedy*

\$100 - \$499

Pippa & David Ader*
Leslie Alexander
Yhatrid Algarin
Carol & Alan Alterman*
William Bau
Hui Bau
Rem Bigosinski
Janice Billingsley
Sonia Bombart
Stephanie Braxton
Sylvia & Louis Broudy*
Janine Brown*
James Buxton
Jennifer Cadoff*
Ruth Carlucci
Eric Chiang*
Megan Collins*
Beth Croke
Andrew Davis*
Carol & Joel Davis*
Laure Dunne*
Thomas Emmons
Deane & Layne Evans
Heide Follin*
Donna Forma*
Karen Frank*

*3 Years Continual Giving

Sally Frank*
Nathaniel Gibbons*
Leslie Giuliani*
Lois Goglia*
Helen & William Gore*
Susan Hacker Stang
Laurie Harrold*
Vincent Hawley*
Carol Herbig*
Meg Hobson*
Benice Horowitz*
Jerry Huang
Renée Hughes*
Kerri Kazak
Ann Kazak
Lorraine Kennedy*
Renee Khatami*
Matthew Kiernan
Caroline Krediet
Cate Leach
Janet Levine*
Eva Levine*
Katherine Linneman
David Lubarsky*
M. Family Fund*
Ellen Mann*
Lynn Mara
Lori Marrone*
Nancy Marx*
Ellen Mason*
Anne Mauk*
Carolyn McDearmon
Alex McFarlane*
Elizabeth & David McKinnis*
Nancy McTague-Stock
Shana Miller
Melissa & Chappy Morris*
Cynthia Mullins*
Alexandra Nash
Karen & Gary Neems*
Christopher Nelson

Nancy Egol Nikkal*
Karen Ogden
Constance Old
Gregory Osier
Carol Paik
Maribeth & Gregory Payne*
Judy Peknik*
Shizue Pleasanton*
Gwen North Reiss*
Maureen Renahan Krinsley
Andrea Resnick*
Michele Riberdy
Beth Ricciardone
Kathleen Rozsa*
Lucy Sallick*
Rick Shaefer*
Janet & Tom Shanley
Marlene Siff
Mary Silberman*
Anita Soos*
Jane Sutherland
Frank Talcott*
Tara & Fan-Chia Tao
Fanching Tao
Elizabeth Tebbe
Lawrence Tetenbaum*
Jo Ubogy*
Mitchell Visoky*
Karen Vogel
Bonnie Woit*
Torrance York*
Janice & Stephan Yost
Michael Zack*
Florence Zolan*

Up to \$99

David Amerling
Thomas Anastasio*
Lindsay Anfang
Anonymous*
Lana Atamen

Stephanie Barnum
Esther Beilenson
Sophia Bellissimo
Haley Bise
Catherine Bishop
Sarah Boyle
Aileen Brill
Ellen Cahill
Katrina Cantwell
Sharon Cavagnolo*
Patricia & Chris Conley
Leigh Conover
Sarah Cutting-Mills
Deb Damascus
Lucy Dathan*
Rebeca Dewey
Susan DiLoreto
Carol Dixon*
Nicola Dougherty
Katherine Downes
Diana Duros
Liza Emilio
Patti Ettinger
Alanna Fagan*
Audrey Fass
Linda Franks
Jay Friedman*
Maria Garcia
Sophia Gevas*
Carrie Giordano
Andrew Graham*
Elon Green
Jeanne Marie Hand
Rosita Hill
Elizabeth Isles*
Paul Johnson*
Shelby Katz
Lorraine Kiernan*
Arete Koutras
Maija Krasts
Terrana-Hollis Kristen

Nancy Lasar*
Ana Lilienfeld
Margaret Lukens
Gabriela Marcus*
Leslie Markus*
Lindsey Meisner
Dorette Moreo*
Caroline Morgan*
Gabrielle Napolitano
Kristin O'Callaghan
Mary Elizabeth &
Christopher O'Connor*
Maura Ohalloran
India Otero
May Rawls
Maria Reed
Martha Robinson*
Lizzie Rosenberg
Marie Rubino
Sarah Ryor
Usana Sansej*
Sue Saylor
Carla Schine
Amy & Stephen Schott*
Susan Sharp*
Julie Sharp
Day Shields*
Betty Staniulis
Sandra Stein*
Alexandra Swenson
Frank Talcott*
Sally Topcuoglu*
Jill Tucker
Pamela Westmoreland*
Christa Whitten
Karen Wilder
Anush Yegyzarian*

*Silvermine's continued success in fostering creativity and cultural enrichment would not be possible
without the incredible support of our donors, members, and volunteers.*

*Your commitment enables us to pursue our mission of nurturing artistic talent, expanding access to the arts,
and creating meaningful connections within the community.*

*Whether through financial contributions, in-kind donations, or the gift of your time and talent,
your support has a lasting impact on the lives of those we serve.*

Thank you for being an essential part of our Silvermine family!

Financial Summary

Silvermine concludes its fiscal year 2024 with modest financial outcomes, achieving a net result of \$45,395 reflecting sound fiscal management and operational efficiency.

The School of Art maintained steady revenues compared to the previous fiscal year, underscoring ongoing demand for educational programs and the ability to attract and retain students. Gallery art sales remained stable as well, reinforcing continued interest in Silvermine's art offerings. Notably, funding for Scholarships and Outreach increased by 8% over the prior year, highlighting the organization's commitment to accessibility and community engagement.

Silvermine's balanced approach to educational excellence and commercial success reflects its holistic mission, fostering both artistic development and financial sustainability.

Fiscal Year Ending June 30, 2024

Operating Information

REVENUE:

Tuition	\$1,704,460
Other Earned Income	207,835
Contributions & Membership	464,291

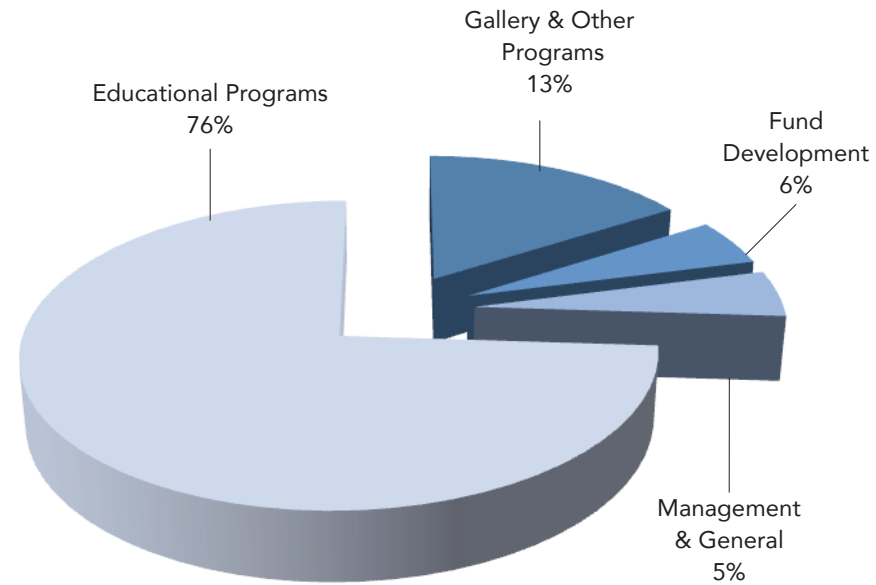
TOTAL REVENUE **\$2,376,586**

EXPENSES:

Compensation & Commissions	\$1,483,851
Scholarships & Outreach	90,144
Programming & Supporting Services	705,921

TOTAL EXPENSES **\$2,244,642**
 Depreciation Expense 51,275

RESULT AFTER DEPRECIATION **\$45,395**



Silvermine Arts Center received an unqualified opinion of its financial statements by its independent auditor, Eck Tax & Accounting. Full audited financial statements are available at the Silvermine Administrative Offices.

Functional Expense Distribution

Silvermine is a 501(c)(3) not-for-profit organization

Staff

Chief Executive Officer
Barbara Linarducci

Gallery Director
Roger Mudre

Outreach Education Coordinator
Missy Savard

Development
Leigh Taylor Mickelson

Marketing & Development Manager
Lisa Scroggins

Social Media Marketing Manager
Susan Hodgson

Marketing Associate
Kate Muldoon

Education Manager
Kelly Michelman

School Operations Manager
Clair Cohen

Registrar
Ali Munro

Gallery Assistants
Caitlyn Balmer
Leslie Cullen

Maintenance
Jim Detlefs
Pat Arbulu

Board of Trustees

Co-Chairs
Rose-Marie Fox
Svetlin Tchakarov

Vice-Chair
Barbara Linarducci*

Treasurer
Grace Tang

Secretary
Mark Carta

Board Members
Carlos Garrido
William Hilson
Michelle Loh
Michael Maresca
Roger Mudre*
Jon Puzzuoli

Honorary Board
Cynthia Guest
Sally Sheehy
Leonard Tow
Diana Wege

*ex-officio

Institutional Partners

- Daniel Edward Offutt, III Private Foundation Trust
- Daphne Seybolt Culpeper Foundation
- CT Office of the Arts
- CT Humanities
- William Randolph Hearst Foundation
- CT Health and Educational Facilities Authority
- Jeniam Foundation
- Colgate Palmolive Company
- New Canaan Community Foundation
- Cornelia T. Bailey Foundation
- DIAGEO
- Institute of International Education
- Brooks & Falotico Associates, Inc.
- The Pitney Bowes Foundation, Inc.
- Horizon Foundation, Inc.
- City of Bridgeport
- City of Norwalk
- Newman's Own Foundation
- The George A. & Grace L. Long Foundation
- National Endowment for the Arts
- Bedford Family Social Responsibility Fund
- United Way of Coastal and Western Connecticut
- Macquarie Group
- Exchange Club of New Canaan
- Pro Bono Partnership, Inc.

100 years on, we remain steadfast in our vision
to be a beacon of artistic inspiration,
a sanctuary for creativity, and a catalyst for positive change.



Together, we will continue to create an environment where artists thrive,
where arts education is accessible to all,
and where the transformative power of art transcends boundaries.

Silvermine

Silvermine Arts Center 1037 Silvermine Road New Canaan, CT 06840